

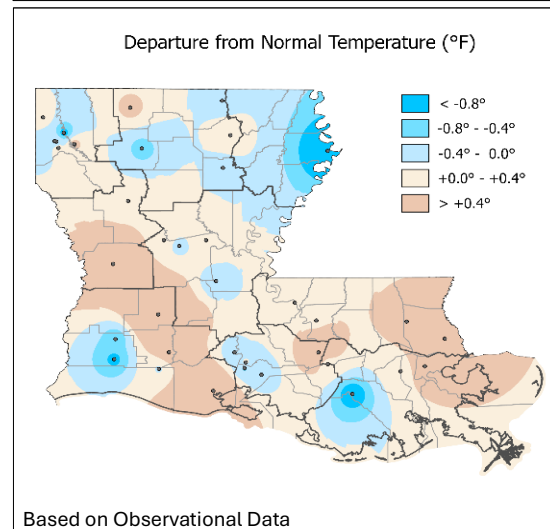
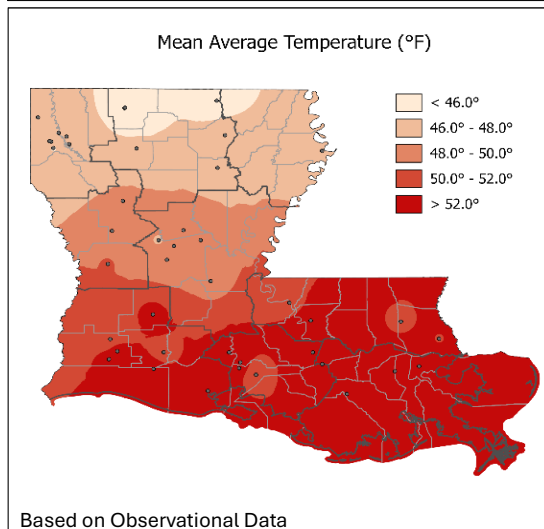
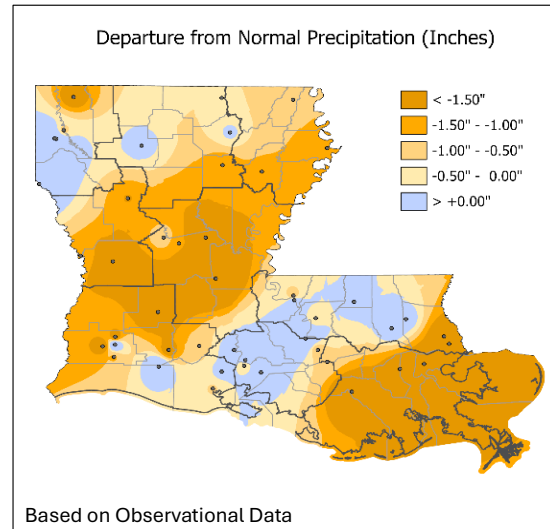
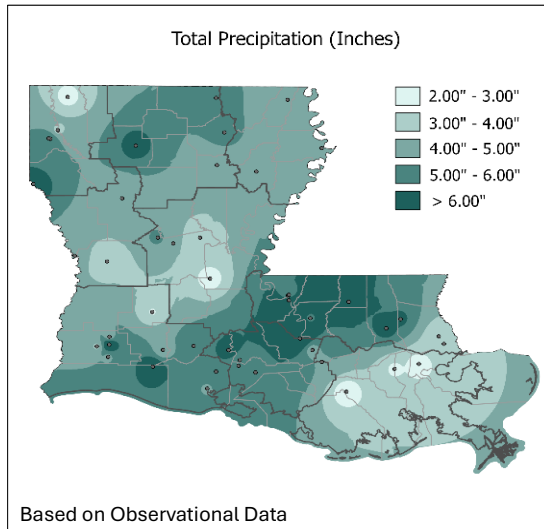


LOUISIANA MONTHLY CLIMATE REVIEW

Volume 2, Issue 01

January 2026

January Total Precipitation and Monthly Average Temperatures



January Highlights:

A destructive ice storm with freezing rain and inches of sleet in parts of the northern half of Louisiana late in the month will long be remembered as the defining weather event of January 2026 (p. 2).

Louisiana's average statewide January temperature was near-normal at 49.8°F. A look at the climographs (p. 3) shows a 'rollercoaster ride' in daily temperatures through the month, with highs reaching the 80's for a number of sites during the first 10 days of January. By contrast, lows dropped into the 'teens between Jan 26-27 across the northern half of the state, with a number of northern communities remaining below-freezing for multiple days.

Averaging at 4.81" for the statewide monthly total, January 2026 is the 8th consecutive month with below-average rainfall for Louisiana. However, sections of the state did record above-normal monthly rainfall, especially along a swath of parishes extending from the south-central coast into the Florida Parishes, where a number of sites topped 8.00" of rain for the month.

Based on the weekly **U.S. Drought Monitor** assessments, between 50% and 66% of Louisiana was deemed as 'in drought' through the course of the month.

Destructive Icing Event January 2026

A major ice and sleet storm in late January crippled much of the northern half of the state and brought I-20 to a standstill in places.

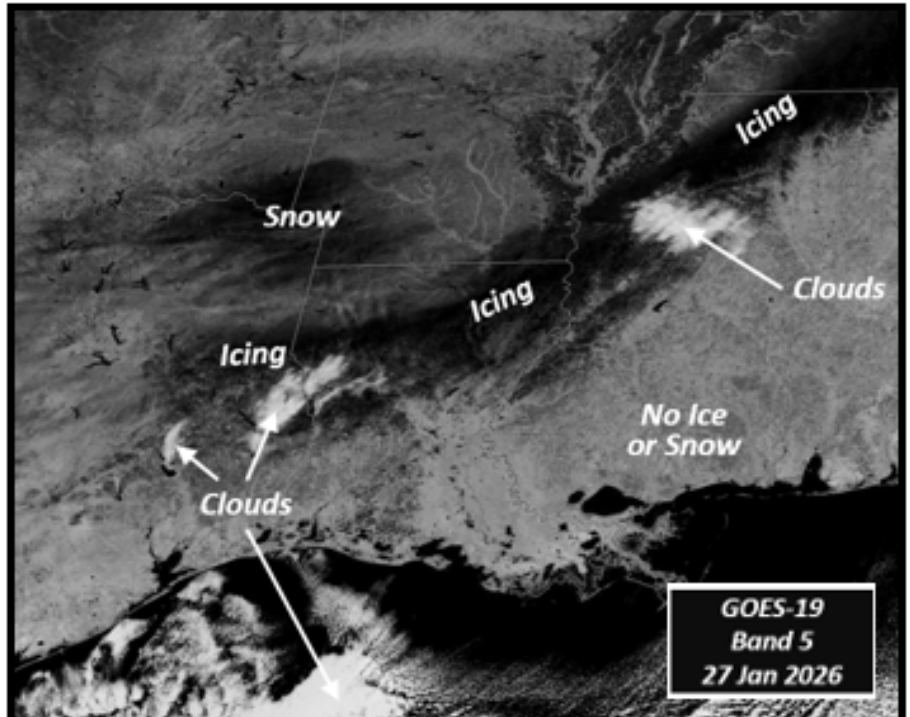
A pro-active Governor Jeff Landry issued a state-of-emergency winter weather preparation on 22 January, with the bulk of the storm impacting Louisiana on 24-25 January 2026. Louisiana was one of 12 states qualified for a federal declaration for the event, in what proved to be among the most impactful U.S. winter storms in recent history, extending over 2000 miles from the Mexican border to the Canadian Maritimes.

For a number of parishes, freezing rain and sleet accumulations were as substantial as those which occurred in 2021 and 1973.

Nine Louisiana fatalities were attributed directly or indirectly to the bitter cold. Preliminary estimates indicate that roughly 150,000 Louisiana customers lost power due to the excessive icing, with several parishes reporting near-total ‘blackouts.’

Utility companies scrambled to “get the lights back on,” but some residences were without power for more than two weeks due to complications and access difficulties.

A frozen layer (sleet and freezing rain) over surfaces remained in place for days due to an Arctic air mass that settled over the region behind the winter precipitation and

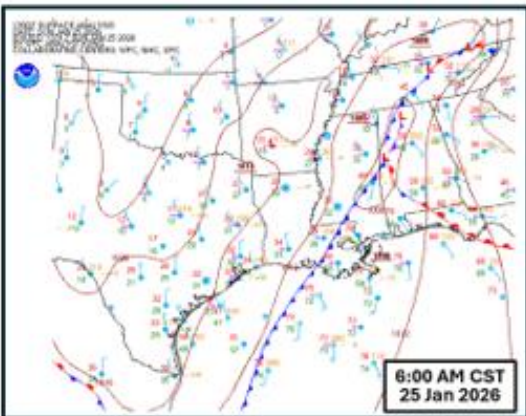


A broad swath of icing (sleet & freezing rain) is evident from East Texas across Louisiana and into Mississippi.

Source: www.star.nesdis.noaa.gov
GOES-19 Snow/Ice Band (Band 5)

NWS Local Storm Reports (Freezing Rain & Sleet)

Parish	Freezing Rain (0.50" or more)	Parish	Sleet (2.0" or more)
Richland	1.00"	Bienville	6.0"
Jackson	0.75"	Lincoln	5.0"
Bienville	0.50"	Bossier	4.5"
Caldwell	0.50"	Ouachita	3.5"
Catahoula	0.50"	De Soto	3.3"
De Soto	0.50"	Caddo	3.0"
Franklin	0.50"	Morehouse	2.0"
Ouachita	0.50"	Union	2.0"
Sabine	0.50"	---	---

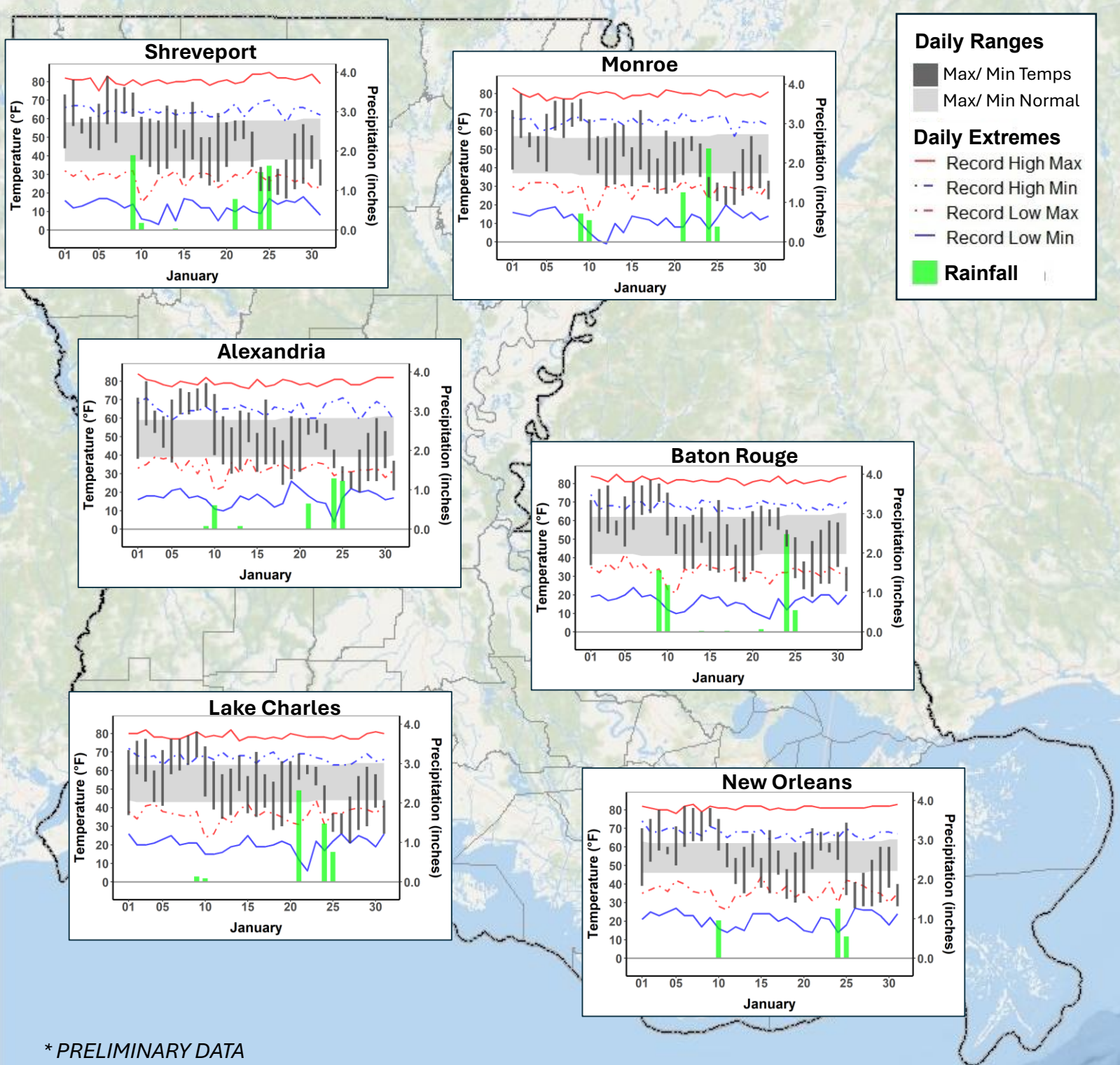


Arctic cold front. Minor snow accumulations were reported along the LA/AR border.

That Arctic air behind the advancing cold front combined with gusty winds at times, dropping minimum daily wind chills into the ‘teens and single digits across many northern parishes. A number of sites failed to climb above freezing for 1-2 days, thanks in part to the winter “glaze” that slowed surface warming even under sunshine.

Fortunately, very little winter precipitation and no accumulations were reported across the southern half of the state. While it did not get quite so cold across the southern parishes, ‘hard’ freezes extended all the way to the coast.

Climographs for Selected Cities: January 2026



* PRELIMINARY DATA

January Synopsis:

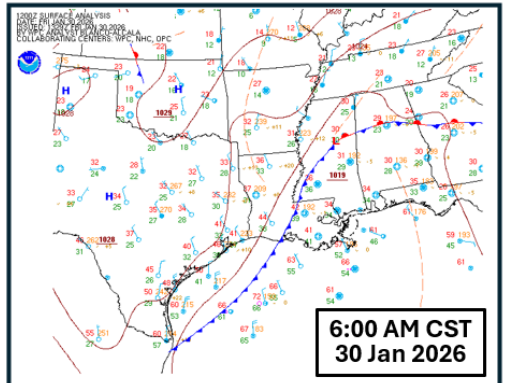
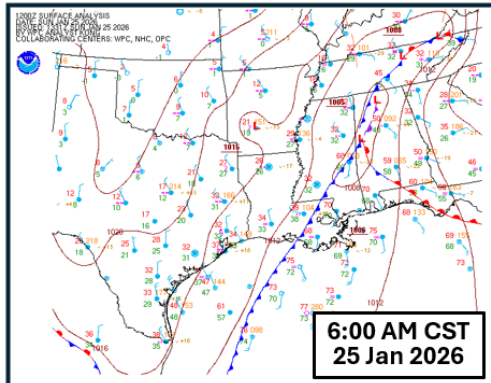
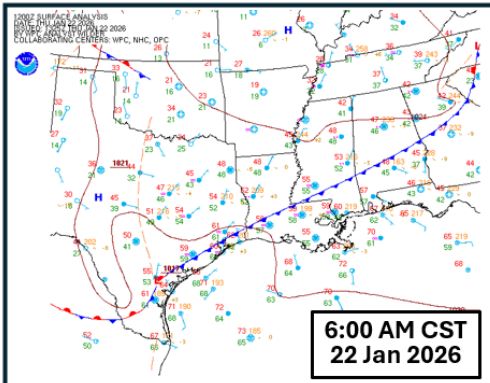
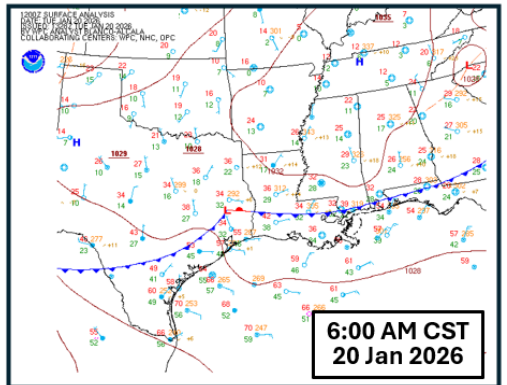
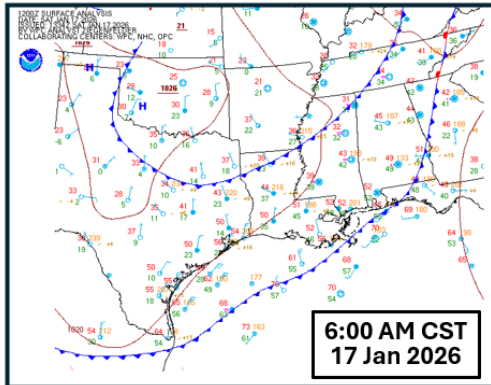
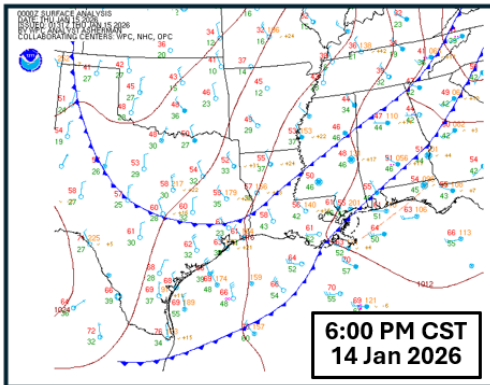
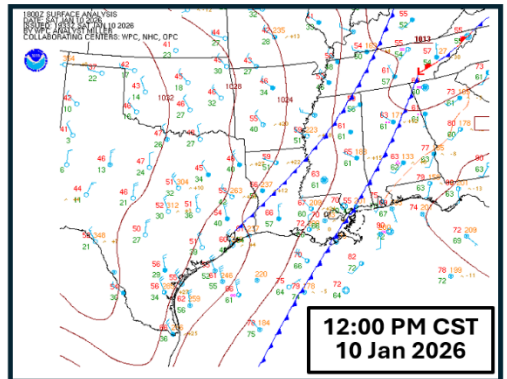
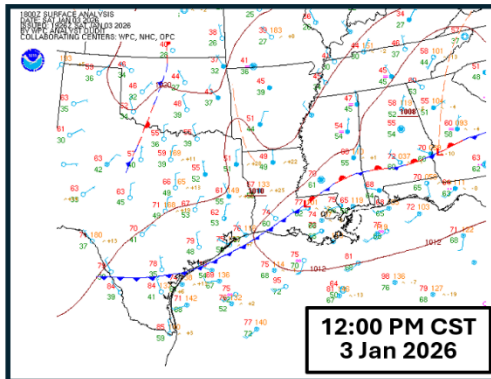
While statewide average rainfall was nearly one-inch below the January normal, it clearly was not due to a lack of frontal passages. Rather, many of the cold fronts that moved through the state during January were “dry” fronts, likely associated to the on-going **La Niña**.

January began with a run of unseasonably-warm days, including several that saw near-record to record highs in the 80’s -- along with near-record to record “warm” minimums -- even with a brief cooling tied to a cold front on Jan 3rd. The next round of cooler weather came with a pair of cold fronts on Jan 9-10 that generated the month’s only round of significant severe storms. Storms delivered from 1.00” to more than 3.00” of rain for numerous parishes and more than 6.00” in the greater Baton Rouge metro area, prompting the NWS to issue a series of *Flash Flood Warnings* for the Capital region. Those storms also produced January’s only tornado for the Bayou State, an EF-1 in Red River Parish just after midnight on Jan 10th.

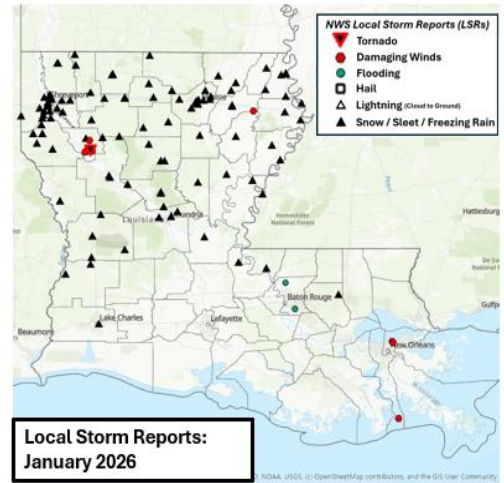
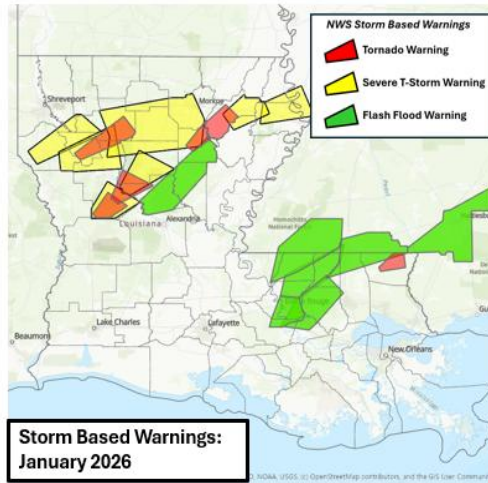
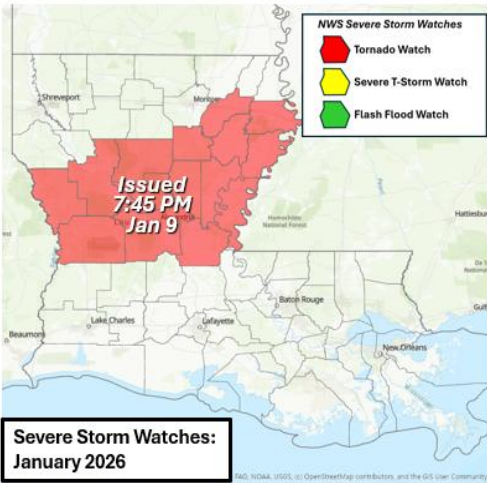
2026’s first freezes arrived on Jan 12th in response to the Arctic air behind that pair of fronts. Temperatures were generally near-normal to below normal throughout much of the middle of January along with a prolonged run of rain-free days in spite of a number of frontal passages. That mid-month spell of cooler weather included another round of freezes on Jan 18-19.

Yet that run of colder days failed to prepare the northern parishes for the *Arctic Blast* and winter precipitation that was about to arrive during Week #4.

Freezing rain, sleet, snow and resulting widespread power outages created a deadly winter nightmare across much of the northern half of the state on Jan 24-25 (p. 2). The winter weather prompted the NWS to issue *Advisories, Watches, and Warnings* along with an emergency declaration by the Governor.



January 2026 Storm Activity



Storm-Based Warnings are issued by local NWS offices (SHV, JAN, LCH & LIX) as warranted. Local Storm Reports (LSRs) are those event reports that are received and processed by the NWS. In most severe weather outbreaks, the occurrences of severe weather impacts -- such as damaging winds, large hail, and localized floodings -- far exceeds the number of reports included in the LSRs.

Tornado Reports: January 2026 (preliminary)

EF Rating	Date	Time (CST)	Parish(es)	Peak Winds (mph)	Path Length (mi)	Path Width (yds)	Fatalities Injuries	Prop Dmg
EF-1	10 Jan 2026	12:04 – 12:06 AM	Red River	88	0.4	84	0 / 0	

Prop Dmg: Structural Damage

January Severe/Impactful Weather:

While the destructive winter weather near month's end (p. 2) will be the most memorable part of January 2026, there were a few additional significant weather events during the month.

The most active severe weather arrived on January 9-10, which prompted the issuance of the month's only *Severe Storm Watch* along with a number of *Storm Based Warnings*. Those *Warnings* were mainly *Severe T-Storm* and *Tornado Warnings* across the northern parishes, whereas the *Warnings* across the southern parishes were mostly for *Flash Flooding*. This period included an EF-1 tornado in Red River Parish just after midnight on the 10th.

Winter months can be very active in terms of severe weather, especially if the cold fronts are sufficiently energized (adequate instability). Fortunately, during January 2026, most of the numerous frontal passages were relatively benign, and in several cases, rain-free.

There were 7 dates in January 2026 with portions of Louisiana included in *Dense Fog Advisories*, yet on only one of those days (Jan 7) were the *Advisories* extended to include virtually the entire state.

Dense Fog Advisories (DFAs):
issued by local NWS offices when widespread visibilities have the potential to drop to ¼ mile or less
For all or portions of their respective service areas

NWS WFO	January 2026 Dates of DFAs
NWS / Jackson (MS)	Jan 7
NWS / Lake Charles	Jan 6, 7, 8 & 22
NWS / New Orleans	Jan 6, 7, 8, 23 & 25
NWS / Shreveport	Jan 7 & 9

Selected January Extremes:

A typical up-and-down temperature pattern that routinely characterizes Louisiana winters is clearly evident with January 2026's selected climographs (p. 3), driven by frequent frontal passages during the month. This pattern led to some near-record to record high temperatures early in the month, while temperatures took a serious nose-dive late in the month during the ice and sleet event (p. 2).

Highs reached the 80's at one or more locations in 8 of the 9 Climate Divisions, with Moss Bluff 2 NNW (SW Div) reporting the state's absolute high of 84°F on Jan 9th, 1 of 4 January dates at that location with a high of 80° or more. At the other extreme, the *Arctic Outbreak* late in the month drove temperatures down into the 'teens for numerous communities, reaching as far south as portions of the I-10/12 corridor on the morning of Jan 27th. A number of northern parishes remained at or below freezing for a day or more during the freeze event, adding to the stress from widespread power outages. January's statewide absolute minimum temperature of 10°F was reported that morning at Homer 1 N (NC Div) with Monroe 26 N (NC Div) bottoming out at 13°F that same morning.

Even with rainfall averaging below-the-norm for the state as a whole, seven sites in the southern portion of Louisiana recorded more than 8.00" of rain for the month, led by Livingston (EC Div) with a whopping 9.60" monthly total. Those large totals were largely the result of the two significant rain events: Jan 9-10 and Jan 24-25. Ironically, the lowest monthly totals were also reported by south Louisiana stations. Four sites in the SE Division recorded less than 2.00" of rain during January, with Cut Off 0.8 WNW (CoCoRaHS, SE Div) posting just 0.87" for the month.

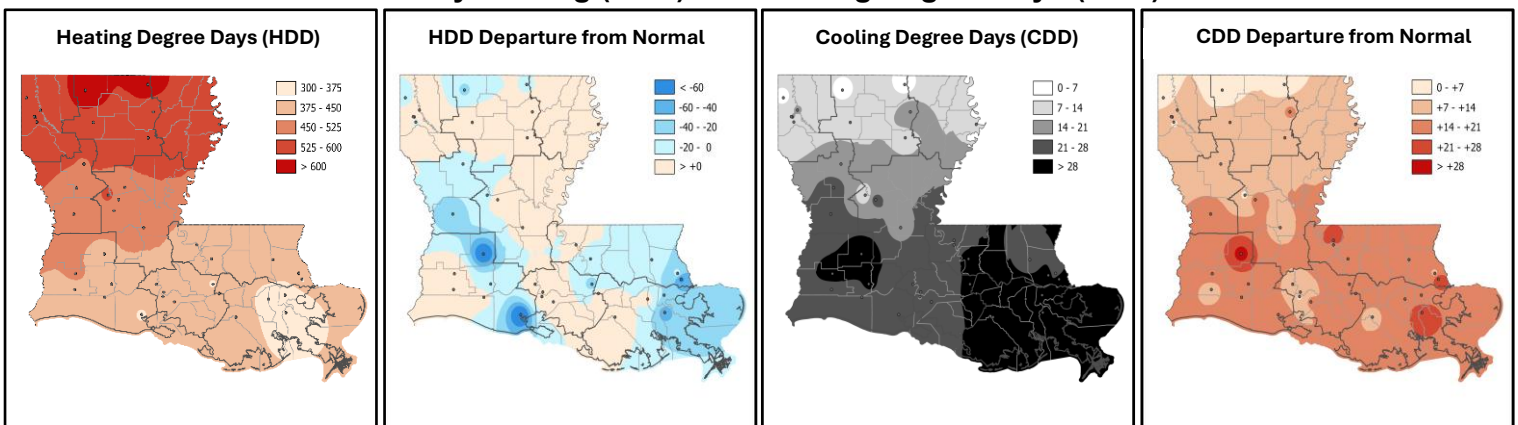
One-day totals for January topped 3.00" for at least one station in 7 of the 9 Climate Divisions. The state's maximum one-day total was 4.37" (nearly one month's worth of rainfall in a single day), recorded at Logansport (NW Div) on Jan 25th.

January Degree Day Assessment:

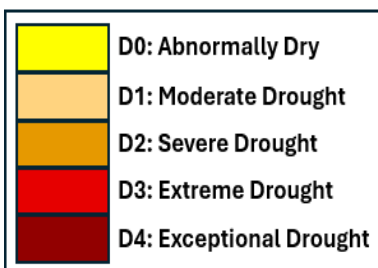
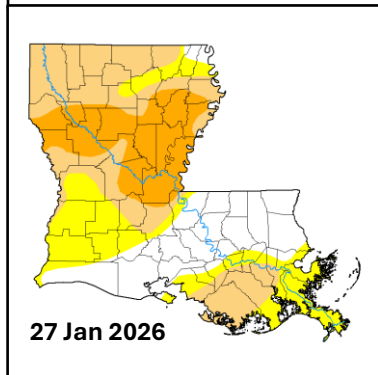
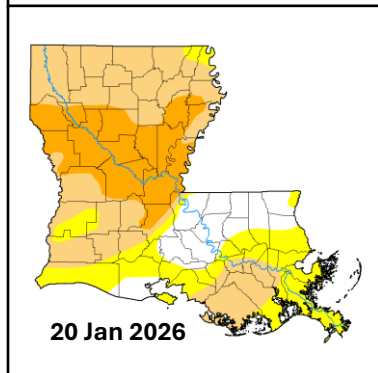
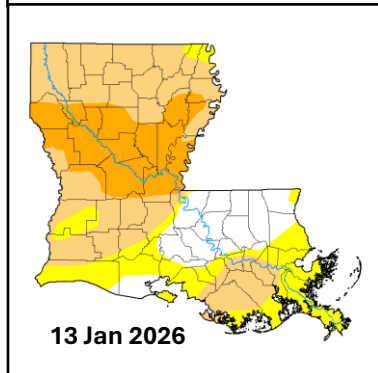
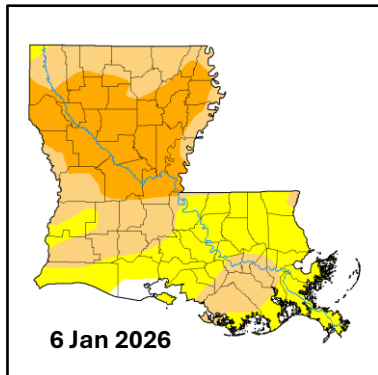
January Heating Degree-Day totals (HDDs) ranged from less than 400 units over portions of southeast Louisiana to more than 600 units along sections of the LA/AR border and were generally near-normal to below-normal statewide. CDD totals were generally minimal, with no station recording accumulations of 40 units or more.

January's rollercoaster temperatures had many Louisiana residents shifting (back and forth) from heaters to A/C over the course of the month, with HDD numbers spiking during the late month Arctic outbreak. Unfortunately, for many north Louisiana residents, prolonged power outages created an unexpected burden, prompting a number of parishes to open "warming" shelters and centers, along with providing additional resources including food and water for some communities.

January Heating (HDD) and Cooling Degree Days (CDD)



Degree Day (DD) units can be used as proxies for energy demand required to maintain indoor thermal comfort. Heating DDs reflect the needs for indoor heating; Cooling DDs approximate the energy needs for indoor cooling. DDs compare the daily average temperature against a threshold of 65°F, with the average daily temperature defined as: $(T_{avg} = [T_{max} + T_{min}] / 2)$, where T_{max} is the daily high temperature and T_{min} is the daily minimum. CDDs are accumulated as the sum of the difference between the daily average temperature (T_{avg}) and 65°F when $T_{avg} > 65°F$; HDDs are the accumulated difference between T_{avg} and 65°F when $T_{avg} < 65°F$.



Louisiana Weekly U.S. Drought Monitor (USDM) thru January 2026:

Louisiana began 2026 with roughly 1/3rd of the state designated as ‘in drought’ (D1 & D2, ‘Moderate’ to ‘Severe Drought’) and virtually all of the remaining areas flagged as ‘Abnormally Dry’ (D0). By the end of January, D1 coverage was still roughly 1/3rd of the state but D2 coverage had increased significantly to roughly 1/5th of the state based on the weekly **USDM** assessments.

Field Condition Reports (courtesy of the LSU AgCenter) noted critical dryness across almost all of Louisiana at the beginning of January. However, with drought conditions expanded by month’s end based on the **USDM**, AgCenter field agents noted ‘Near Normal’ to ‘Wet’ conditions across all but one of the reporting parishes following the major winter system of Jan 23-25 (p. 2).

January is typically the wettest month of the winter season across the Bayou State as more frequent frontal passages provide consistent rounds of precipitation. It is an important month hydrologically as vegetation is typically dormant and temperatures are cool which reduces evapotranspiration (ET) and allows incoming precipitation to “re-charge” soil moisture levels and provide moisture reserves that will support the re-emergence of vegetation in the spring.

January started with virtually no precipitation and warmer-than-normal conditions as high pressure was in control. A frontal passage on Jan 2-3 was dry. Several rounds of precipitation moved through the state between Jan 8-10 in association with frontal passages. In fact, localized flooding was an issue for portions of southeastern Louisiana, where radar-estimated totals topped 6.00” in some areas. Another period of dryness followed as a series of frontal passages -- on Jan 14, Jan 16-17, and Jan 19-20 -- reduced temperatures but were all mostly dry.

The dry spell was briefly broken by the major winter storm of Jan 23-25, which produced rain across most of central and southern Louisiana but delivered a winter disaster for many northern parishes with freezing rain, sleet, and some snow.

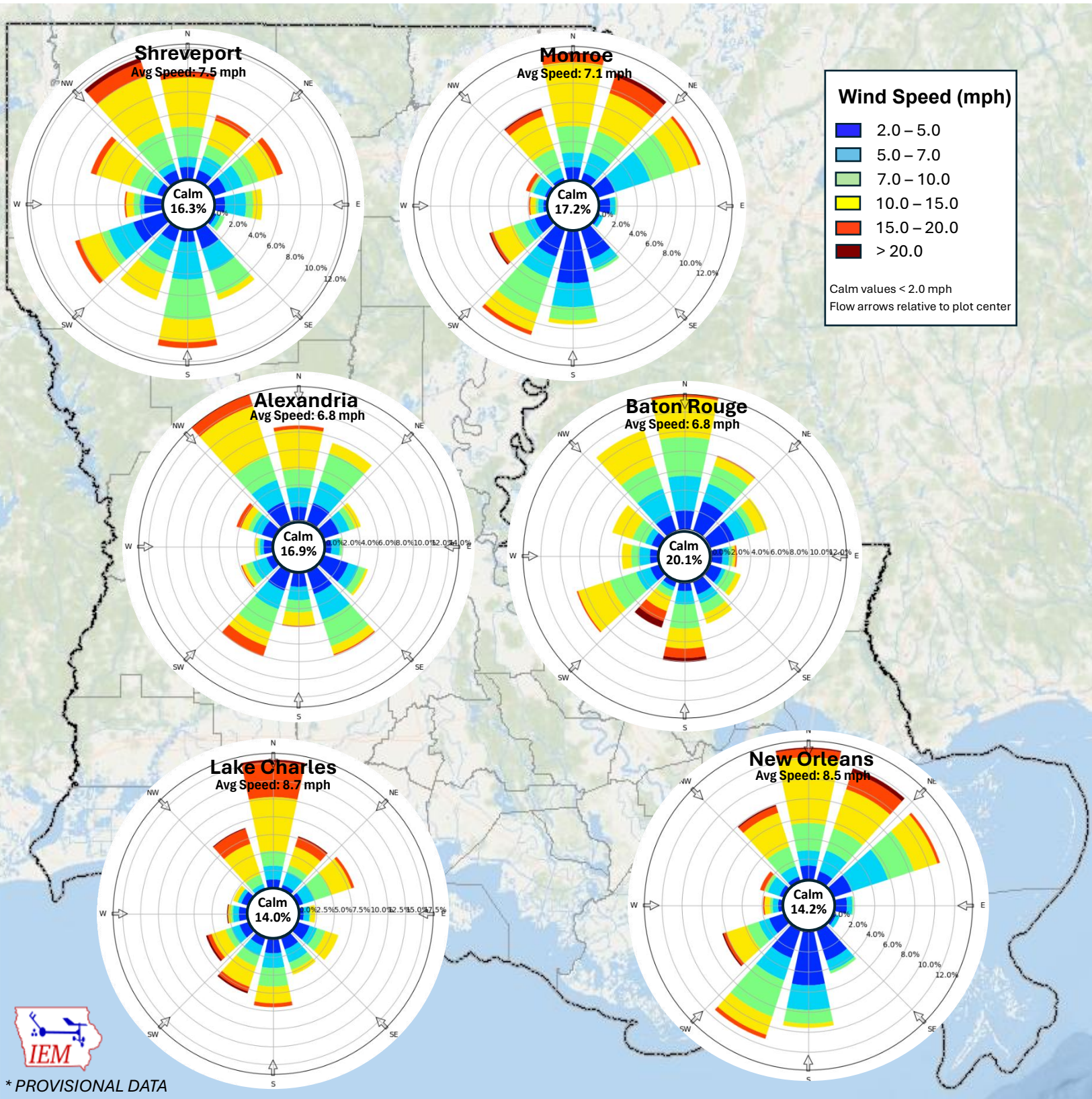
In response to the dry runs of days during January, the weekly **USDM** through Jan 6th showed a significant increase in drought coverage, with ‘Severe Drought’ (D2) expanding over nearly 1/3rd of the state, the most since Jan 2024. Despite drier-than-normal conditions during the middle of the month, below normal temperatures reduced evapotranspiration (ET), limiting further drought development. The final depiction for the month (based on data through Jan 27 and released on Jan 29) showed modest improvements across central and southern Louisiana due to the Jan 23-25 winter storm. (Improvements were delayed across most of northern Louisiana as precipitation was still frozen and had not yet yielded hydrological impacts.)

Drought and Climate Outlook:

Looking ahead, a transition from **La Niña** to ENSO-neutral conditions (sometimes referred to as **La Nada**) is expected during spring 2026. Typically, **La Niña’s** dry influence on precipitation patterns in Louisiana wanes as we move towards the latter weeks of spring.

This aligns with the latest three-month outlook from the NWS Climate Prediction Center (CPC) which does not show a strong precipitation signal but shows a high probability for above-normal temperatures. If the temperature outlook verifies and rainfall fails to return to something ‘near normal’ to ‘wet’, then Louisiana can expect an increase in drought coverage (and intensity), likely leading to critical moisture shortages for the state’s agricultural producing sectors.

Windroses for Selected Cities: January 2026



Windroses Courtesy: [Iowa Environmental Mesonet \(IEM\)](http://www.iem.uiowa.edu), Iowa State University

January Monthly Division & State Temperature and Precipitation Summaries

Divisions	Avg T-Max	Avg T-Min	T-Avg	T-Avg DFN	Highest T-Max	Lowest T-Min	HDD	HDD %Norm	CDD	CDD %Norm	Total Precip	Precip DFN	1-Day P-Max	Rain Days
Northwest	57.1	36.9	47.0	+0.2	83	17	563	99	12	200	4.64	-0.22	4.37	8
North Central	56.9	34.6	45.8	-0.5	80	10	599	102	10	143	5.59	+0.09	3.63	5
Northeast	57.4	36.8	47.1	+0.4	79	M	M	M	M	M	5.34	-0.34	1.61	8
West Central	61.0	37.6	49.2	+0.6	82	16	500	96	20	143	3.89	-1.62	3.20	7
Central	59.5	38.0	48.7	-0.7	81	16	514	103	16	94	3.65	-2.46	2.20	8
East Central	63.2	39.6	51.4	+0.6	82	16	441	94	26	100	6.44	+0.39	3.80	9
Southwest	62.0	42.5	52.2	+0.3	84	16	417	96	28	112	5.20	-0.63	3.95	7
South Central	63.0	41.7	52.3	-0.4	81	20	411	99	26	76	6.04	+0.45	3.26	9
Southeast	63.4	44.7	54.1	+0.2	83	20	364	94	32	76	2.48	-2.75	2.48	7
STATE	60.4	39.2	49.8	-0.1	84	10	476	104	21	77	4.81	-0.85	4.37	8

January Monthly Station & Division Temperature and Precipitation Summaries

Stations	Avg T-Max	Avg T-Min	T-Avg	T-Avg DFN	Highest T-Max	Lowest T-Min	HDD	HDD %Norm	CDD	CDD %Norm	Total Precip	Precip DFN	1-Day P-Max	P-Max Date	Rain Days
Northwest Division															
Bossier City 4.0 S	-	-	-	-	-	-	-	-	-	-	5.45	-	2.55	1/10	6
Converse 7.8 NNW	-	-	-	-	-	-	-	-	-	-	3.06	-	1.10	1/10	8
Keithville	-	-	-	-	-	-	-	-	-	-	4.94	-0.13	2.24	1/10	6
Logansport	-	-	-	-	-	-	-	-	-	-	6.98	+1.80	4.37	1/25	7
Mooringsport 1 N	55.9	36.4	46.2	+0.3	75	17	583	98	4	200	M	M	M	M	M
Plain Dealing	-	-	-	-	-	-	-	-	-	-	2.57	-2.21	1.17	1/10	6
Shreveport DTN AP	57.7	37.5	47.6	-1.1	80	20	547	107	15	250	3.56	-0.81	1.61	1/9	7
Shreveport SHV AP	58.5	36.7	47.6	-0.3	83	17	550	102	17	340	6.03	+1.63	1.90	1/9	8
Shreveport WFO	56.4	37.0	46.7	-0.0	79	18	573	101	12	600	5.08	+0.84	2.14	1/9	9
Stonewall 5.3 NE	-	-	-	-	-	-	-	-	-	-	4.54	-	1.75	1/25	8
Taylorstown	-	-	-	-	-	-	-	-	-	-	4.20	-	1.67	1/10	10
Division	57.1	36.9	47.0	+0.2	83	17	563	99	12	200	4.64	-0.22	4.37		8
North Central Division															
Bienville 3 NE	56.8	35.5	46.2	-0.6	78	18	590	103	12	400	6.49	+0.30	2.50	1/24	5
Calhoun 4.3 SSE	-	-	-	-	-	-	-	-	-	-	6.68	+1.21	3.50	1/25	6
Carlton 1.7 E	-	-	-	-	-	-	-	-	-	-	6.23	-	3.63	1/25	6
Columbia Lock	57.1	36.5	46.8	-0.1	78	20	570	101	13	325	4.60	-1.40	1.70	1/10	6
Homer 1 N	57.3	31.5	44.4	+0.6	78	10	636	97	5	500	M	M	M	M	M
Jonesboro 3.8 ESE	-	-	-	-	-	-	-	-	-	-	4.74	-	1.70	1/10	4
Monroe MLU AP	57.0	37.2	47.1	+0.3	80	20	568	100	18	600	5.29	+0.14	2.37	1/24	5
Monroe 26 N	56.5	32.5	44.5	-0.1	76	13	633	100	4	200	5.26	-0.36	1.25	1/9	6
Quitman 2.5 E	-	-	-	-	-	-	-	-	-	-	6.34	-	3.14	1/25	5
Rocky Branch 1.3 W	-	-	-	-	-	-	-	-	-	-	4.69	-	2.10	1/10	6
Division	56.9	34.6	45.8	-0.5	80	10	599	102	10	143	5.59	+0.09	3.63		5

* T – Temperature (°F) DFN - Departure from Normal P – Precipitation (in.) "-" indicates data not available "M" - missing observation(s)

January Monthly Station Temperature and Precipitation Summaries

Northeast Division															
Stations	Avg T-Max	Avg T-Min	T-Avg	T-Avg DFN	Highest T-Max	Lowest T-Min	HDD	HDD %Norm	CDD	CDD %Norm	Total Precip	Precip DFN	1-Day P-Max	P-Max Date	Rain Days
<i>FSA-Oak Grove 0.2 S</i>	-	-	-	-	-	-	-	-	-	-	6.05	-	M	M	M
<i>FSA-Tallulah 1.7 SSE</i>	-	-	-	-	-	-	-	-	-	-	5.95	-	M	M	M
<i>Oak Grove 1.9 E</i>	-	-	-	-	-	-	-	-	-	-	6.09	-	1.61	1/10	8
<i>Tallulah TVR AP</i>	57.4	36.8	47.1	-0.5	79	M	M	M	M	M	4.13	-1.31	1.36	1/9	10
<i>Winnsboro 5 SSE</i>	M	M	M	M	M	M	M	M	M	M	4.46	-1.09	1.60	1/25	7
	57.4	36.8	47.1	+0.4	79	M	M	M	M	M	5.34	-0.34	1.61		8
West Central Division															
<i>Anacoco 3.0 SW</i>	-	-	-	-	-	-	-	-	-	-	3.33	-	1.57	1/25	7
<i>Campti 0.6 SW</i>	-	-	-	-	-	-	-	-	-	-	4.26	-	1.94	1/25	6
<i>Campti 5.7 ENE</i>	-	-	-	-	-	-	-	-	-	-	3.51	-	1.52	1/10	5
<i>Goldonna 1.5 N</i>	-	-	-	-	-	-	-	-	-	-	4.19	-	1.92	1/25	5
<i>Hornbeck 2.3 NE</i>	-	-	-	-	-	-	-	-	-	-	3.36	-	1.85	1/25	6
<i>Leesville</i>	62.1	38.1	50.1	+1.5	82	16	477	93	23	329	3.11	-2.46	1.88	1/25	9
<i>Leesville 7.1 SSW</i>	-	-	-	-	-	-	-	-	-	-	2.81	-	0.97	1/25	8
<i>Many 9 WSW</i>	-	-	-	-	-	-	-	-	-	-	4.13	-1.31	1.75	1/25	10
<i>Natchitoches #2</i>	59.8	37.0	48.4	+0.2	81	18	523	99	16	320	4.07	-1.53	1.60	1/10	5
<i>Pitkin 6.6 WNW</i>	-	-	-	-	-	-	-	-	-	-	6.01	-	3.20	1/10	5
<i>Pleasant Hill 10.2 SE</i>	-	-	-	-	-	-	-	-	-	-	3.48	-1.95	1.39	1/10	5
<i>Toledo Bend Lake</i>	M	M	M	M	M	M	M	M	M	M	4.42	-1.14	1.72	1/25	8
Division	61.0	37.6	49.2	+0.6	82	16	500	96	20	143	3.89	-1.62	3.20		7
Central Division															
<i>Alexandria AEX AP</i>	59.4	38.7	49.1	-0.2	80	20	511	103	23	329	4.00	-1.47	1.29	1/24	10
<i>Alexandria ESF AP</i>	60.0	37.3	48.6	+0.3	81	16	M	M	M	M	3.47	-2.30	1.03	1/25	8
<i>Beaver Fire Tower</i>	-	-	-	-	-	-	-	-	-	-	3.14	-3.75	1.93	1/25	7
<i>Boyce 3 WNW</i>	58.4	37.2	47.8	+0.3	77	18	536	98	8	400	5.31	-0.47	2.20	1/10	9
<i>Bunkie</i>	60.0	38.6	49.3	-0.4	79	18	496	103	18	257	2.42	-4.37	0.86	1/25	8
<i>Colfax 7.2 NW</i>	-	-	-	-	-	-	-	-	-	-	3.27	-	1.95	1/25	6
<i>FSA-Ferriday 1.0 WSW</i>	-	-	-	-	-	-	-	-	-	-	3.43	-	1.60	1/10	M
<i>FSA-Opelousas 1.0 ESE</i>	-	-	-	-	-	-	-	-	-	-	6.02	-	M	M	M
<i>Grand Coteau 2.7 E</i>	-	-	-	-	-	-	-	-	-	-	4.67	-2.42	2.07	1/25	6
<i>Hessmer 2.5 WSW</i>	-	-	-	-	-	-	-	-	-	-	2.56	-	M	M	M
<i>Pineville 0.4 NNW</i>	-	-	-	-	-	-	-	-	-	-	3.67	-	1.90	1/25	8
<i>Red River Lock #1</i>	-	-	-	-	-	-	-	-	-	-	2.03	-3.43	1.00	1/26	7
<i>Red River Lock #2</i>	-	-	-	-	-	-	-	-	-	-	3.21	-2.64	0.95	1/26	7
<i>Trout 4.4 WSW</i>	-	-	-	-	-	-	-	-	-	-	3.93	-	0.94	1/10	7
Division	59.5	38.0	48.7	-0.7	81	16	514	103	16	94	3.65	-2.46	2.20		8

* T – Temperature (°F) DFN - Departure from Normal P – Precipitation (in.) "-" indicates data not available "M" - missing observation(s)

January Monthly Station Temperature and Precipitation Summaries

East Central Division															
Stations	Avg T-Max	Avg T-Min	T-Avg	T-Avg DFN	Highest T-Max	Lowest T-Min	HDD	HDD %Norm	CDD	CDD %Norm	Total Precip	Precip DFN	1-Day P-Max	P-Max Date	Rain Days
Baton Rouge Metro AP	63.4	41.2	52.3	+0.4	82	19	415	99	29	223	5.93	-0.43	2.48	1/24	8
Baton Rouge 0.5 ESE	-	-	-	-	-	-	-	-	-	-	8.45	-	3.17	1/25	10
Baton Rouge 3.5 E	-	-	-	-	-	-	-	-	-	-	8.14	-	3.00	1/25	10
Baton Rouge 6.2 SSE	-	-	-	-	-	-	-	-	-	-	8.33	-	3.22	1/25	11
Central 2.2 SE	-	-	-	-	-	-	-	-	-	-	7.40	+1.04	2.78	1/25	7
Clinton 0.2 NNW	-	-	-	-	-	-	-	-	-	-	8.61	-	3.80	1/10	8
Covington 8 WNW	65.2	37.8	51.5	+0.6	81	19	438	98	24	343	6.22	+0.62	2.51	1/25	6
Denham Springs 6.8 N	-	-	-	-	-	-	-	-	-	-	7.33	+1.05	2.94	1/25	6
FSA-Amite City 0.8 SW	-	-	-	-	-	-	-	-	-	-	6.81	-	2.71	1/9	M
FSA-Franklinton 0.6 WSW	-	-	-	-	-	-	-	-	-	-	7.52	-	2.70	1/9	M
Jackson 3.6 NNE	-	-	-	-	-	-	-	-	-	-	7.22	-	3.80	1/10	10
Lacombe 1.4 N	-	-	-	-	-	-	-	-	-	-	4.01	-1.58	1.65	1/25	8
Livingston	-	-	-	-	-	-	-	-	-	-	9.60	+3.65	3.77	1/25	5
New Roads 5 NE	61.7	41.6	51.7	+0.2	80	18	430	100	27	270	7.44	+0.91	3.08	1/10	8
Ponchatoula 4 E	-	-	-	-	-	-	-	-	-	-	6.64	+1.03	3.06	1/25	9
Ponchatoula 5.3 W	-	-	-	-	-	-	-	-	-	-	5.47	-	2.36	1/25	10
Slidell	M	M	M	M	M	M	M	M	M	M	3.54	-2.38	1.51	1/11	7
Slidell ASD AP	63.7	40.2	51.9	+0.6	81	19	421	97	23	209	3.25	-2.32	1.21	1/24	7
Slidell 4.4 E	-	-	-	-	-	-	-	-	-	-	3.03	-2.78	1.19	1/11	9
St. Francisville 1 NE	61.9	37.0	49.5	+1.4	81	16	499	95	27	-	5.62	-	2.66	1/10	10
Talisheek	-	-	-	-	-	-	-	-	-	-	4.38	-0.37	2.10	1/25	9
Wakefield 0.2 E	-	-	-	-	-	-	-	-	-	-	6.72	-	3.33	1/10	13
Division	63.2	39.6	51.4	+0.6	82	16	441	94	26	100	6.44	+0.39	3.80		9
Southwest Division															
Abbeville	-	-	-	-	-	-	-	-	-	-	6.03	+0.27	3.24	1/25	11
Branch 0.4 SSW	-	-	-	-	-	-	-	-	-	-	4.64	-	3.20	1/25	5
Church Point 0.7 WSW	-	-	-	-	-	-	-	-	-	-	5.45	-	3.26	1/25	7
Crowley 2 NE	-	-	-	-	-	-	-	-	-	-	5.50	-0.90	3.53	1/25	5
FSA-De Ridder 0.9 E	-	-	-	-	-	-	-	-	-	-	6.97	-	3.44	1/10	M
Jennings	61.0	42.2	51.6	+0.7	78	21	436	98	29	363	4.19	-2.10	1.84	1/22	9
Kaplan	-	-	-	-	-	-	-	-	-	-	6.46	+0.70	2.89	1/25	5
Lake Arthur 7 SW	60.5	44.3	52.4	-0.0	78	24	406	102	24	267	7.38	+1.77	3.80	1/22	7
Lake Charles 2 N	-	-	-	-	-	-	-	-	-	-	8.09	+2.00	3.95	1/25	5
Lake Charles LCH AP	62.9	41.6	52.3	-0.9	81	21	412	109	25	179	4.79	-1.10	2.32	1/21	5
Lake Charles 4.8 SSE	-	-	-	-	-	-	-	-	-	-	4.67	-	2.28	1/22	5
Leland Bowman Lock	62.1	45.2	53.7	+3.5	78	23	368	80	24	800	4.85	-0.58	2.70	1/24	9
Moss Bluff	-	-	-	-	-	-	-	-	-	-	4.38	-2.43	2.26	1/25	5
Moss Bluff 2 NNW	62.5	38.9	50.7	-0.7	84	16	469	108	31	238	4.31	-2.26	1.53	1/21	10
Oberlin Fire Tower	62.9	42.7	52.8	+3.6	80	19	408	82	37	617	2.93	-3.49	1.69	1/25	4

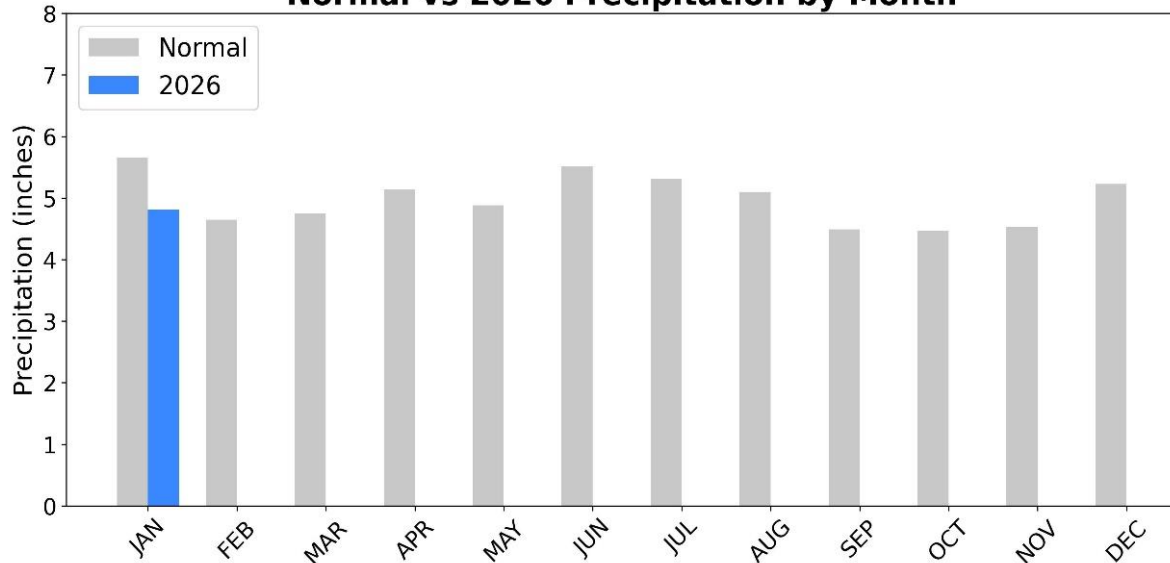
* T – Temperature (°F) DFN - Departure from Normal P – Precipitation (in.) "-" indicates data not available "M" - missing observation(s)

January Monthly Station Temperature and Precipitation Summaries

Southwest Division (cont.)															
Stations	Avg T-Max	Avg T-Min	T-Avg	T-Avg DFN	Highest T-Max	Lowest T-Min	HDD	HDD %Norm	CDD	CDD %Norm	Total Precip	Precip DFN	1-Day P-Max	P-Max Date	Rain Days
Ragley 5.0 SE	-	-	-	-	-	-	-	-	-	-	3.72	-2.57	1.65	1/25	4
Rayne 1.0 W	-	-	-	-	-	-	-	-	-	-	6.44	-	2.84	1/25	9
Sulphur	-	-	-	-	-	-	-	-	-	-	3.73	-2.44	1.43	1/21	11
Sulphur 2.2 E	-	-	-	-	-	-	-	-	-	-	4.24	-1.81	1.89	1/25	9
Division	62.0	42.5	52.2	+0.3	84	16	417	96	28	112	5.20	-0.63	3.95		7
South Central Division															
Breaux Bridge 0.7 NNW	-	-	-	-	-	-	-	-	-	-	5.78	-	2.47	1/10	10
Carencro	-	-	-	-	-	-	-	-	-	-	5.59	-1.39	2.10	1/10	8
Carville 2 SW	63.5	44.0	53.8	+1.4	81	21	368	92	28	350	4.44	-1.03	2.20	1/24	8
Donaldsonville 4 SW	63.7	40.5	52.1	+0.2	81	20	424	101	30	231	4.89	-0.89	2.71	1/25	7
Jeanerette 5 NW	62.4	39.6	51.0	-0.4	78	20	452	105	24	267	5.67	+0.55	2.75	1/25	8
Lafayette LFT AP	62.6	42.3	52.5	-0.4	79	20	410	105	28	187	6.71	+0.79	2.13	1/24	9
Lafayette 2.9 ENE	-	-	-	-	-	-	-	-	-	-	6.16	-	M	M	M
New Iberia ARA AP	62.7	42.1	52.4	-0.5	80	20	402	103	20	133	5.05	-0.31	3.11	1/24	9
Plaquemine 2 N	-	-	-	-	-	-	-	-	-	-	8.78	+2.98	3.11	1/25	13
St. Gabriel 2.8 NNW	-	-	-	-	-	-	-	-	-	-	6.95	-	3.11	1/25	10
St. Martinville 0.2 S	-	-	-	-	-	-	-	-	-	-	6.43	+0.68	3.26	1/25	9
Division	63.0	41.7	52.3	-0.4	81	20	411	99	26	76	6.04	+0.45	3.26		9
Southeast Division															
Belle Chasse 1.6 NNE	-	-	-	-	-	-	-	-	-	-	1.24	-	0.65	1/26	9
Cut Off 0.8 WNW	-	-	-	-	-	-	-	-	-	-	0.87	-	0.40	1/11	6
Dutchtown #2	-	-	-	-	-	-	-	-	-	-	4.82	-0.75	2.42	1/25	10
Houma 4.1 ENE	-	-	-	-	-	-	-	-	-	-	1.23	-	0.43	1/26	7
NO-Armstrong AP	64.1	44.7	54.4	+0.1	82	27	358	103	36	200	2.81	-2.37	1.26	1/24	6
NO-Lakefront AP	62.5	47.1	54.8	+0.9	83	27	336	94	28	215	2.30	-2.96	0.78	1/25	6
New Orleans 2.8 E	-	-	-	-	-	-	-	-	-	-	2.06	-	0.92	1/11	8
Metairie 2.8 ENE	-	-	-	-	-	-	-	-	-	-	3.09	-	1.22	1/25	6
River Ridge 0.7 N	-	-	-	-	-	-	-	-	-	-	2.86	-	M	M	M
St. Amant 3.3 N	-	-	-	-	-	-	-	-	-	-	4.34	-	2.48	1/25	10
St. Rose 0.3 W	-	-	-	-	-	-	-	-	-	-	2.93	-	1.03	1/25	5
Thibodaux 4 SE	63.7	42.2	53.0	-1.2	79	20	397	112	31	163	2.14	-3.62	0.89	1/25	4
Westwego 2.4 ENE	-	-	-	-	-	-	-	-	-	-	1.56	-	0.71	1/25	6
Division	63.4	44.7	54.1	+0.2	83	20	364	94	32	76	2.48	-2.75	2.48		7

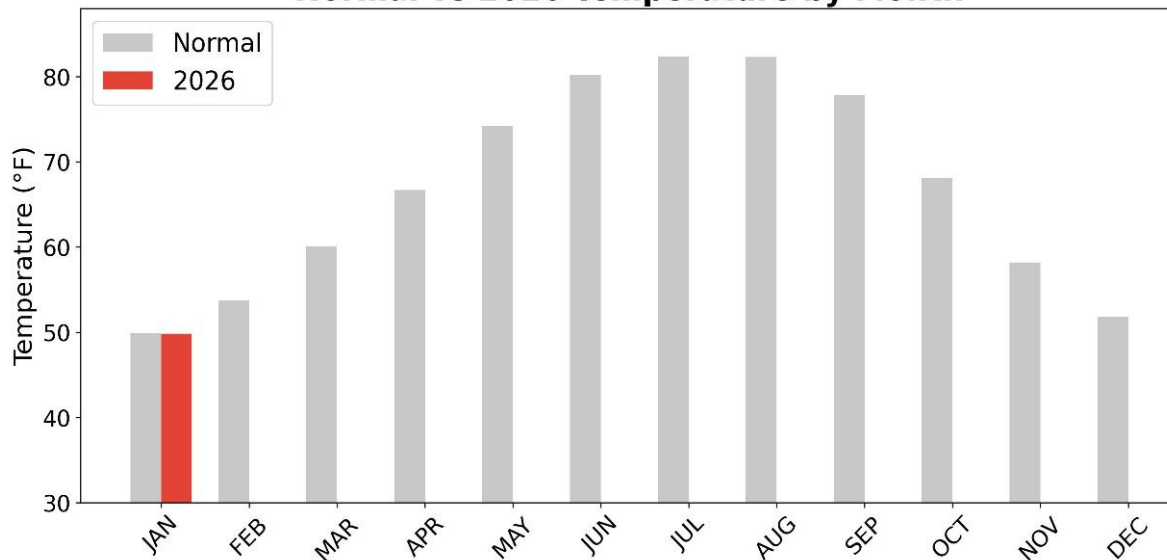
* T – Temperature (°F) DFN - Departure from Normal P – Precipitation (in.) "-" indicates data not available "M" - missing observation(s)

Normal vs 2026 Precipitation by Month

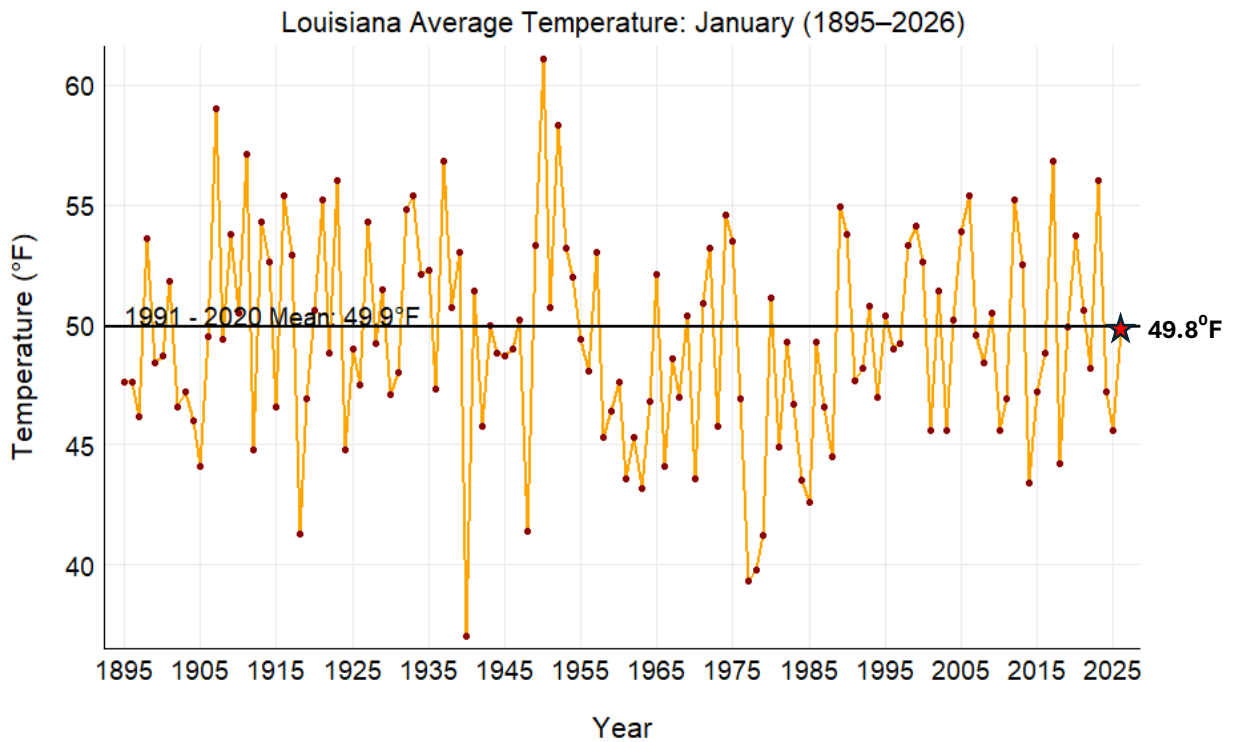
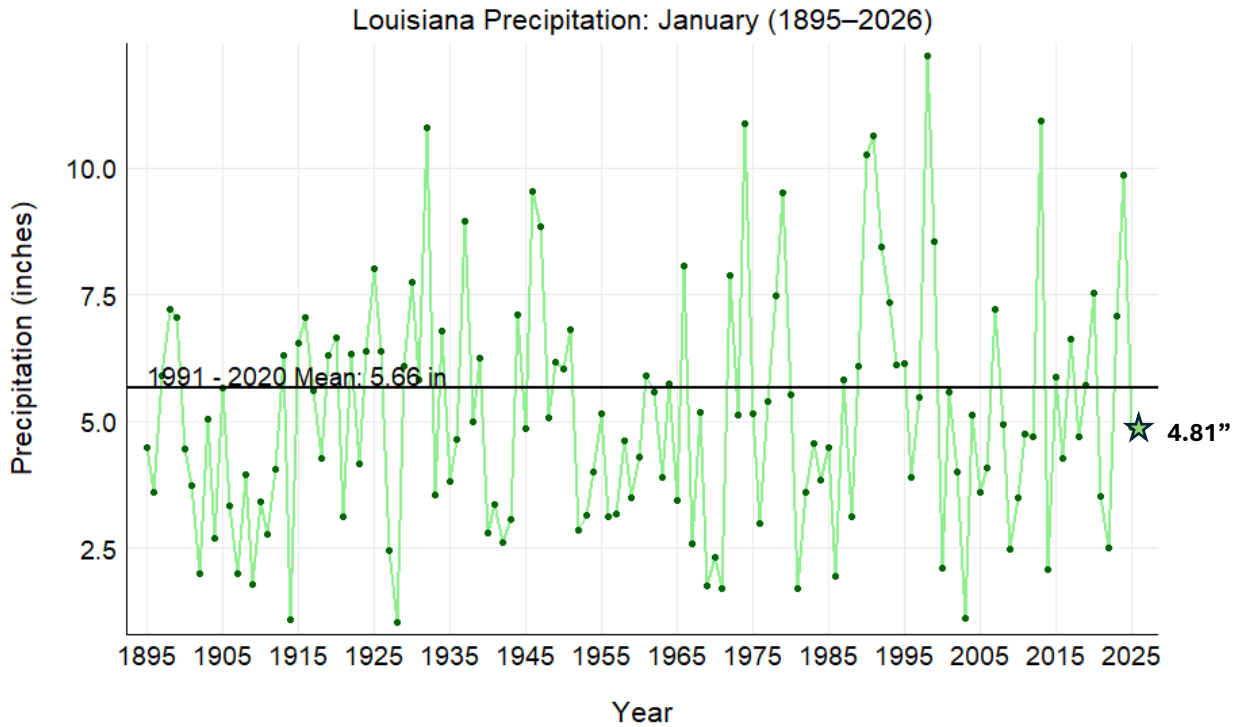


The influence of *La Niña* on Louisiana winter climate appears to remain ‘in play’, at least to some degree, as statewide-averaged January monthly rainfall was below-the-norm. Preliminary three-month statewide rainfall (Nov-Dec-Jan) is estimated to be 10.34”, just 67% of normal. Indeed, statewide monthly rains have averaged below normal for every month since May 2025, accounting in a large part for Louisiana’s drought conditions that have persisted through the winter.

Normal vs 2026 Temperature by Month



January 2026’s statewide-averaged temperature departure of -0.1°F (preliminary) was modest, but it is noteworthy: this is the first month since January 2025 with statewide temperatures running below-the-norm.



★ Preliminary Data

Precipitation and temperature data in this report are primarily retrieved through the ACIS QueryBuilder (rcc-acis.org) and the cli-MATE platform (MRCC Application Tools Environment), both of which are maintained by the NOAA Regional Climate Centers (RCCs). Drought data are sourced from the U.S. Drought Monitor (unl.edu), the LSU AgCenter, and the Louisiana Dept. of Agriculture & Forestry.