

Industry Services at CAMD Protein Crystallography

LSU

Rapid access and quick turn-around times for projects

Perform diffraction experiments on macromolecules at any energy from 7.0 - 15 keV with resolution of 3 eV, suitable for MAD and SAD phasing of macromolecules

Co-crystallization and small molecule soaks are routinely performed

Expertise in state-of-the-art data collection and processing strategies that result in high-quality data

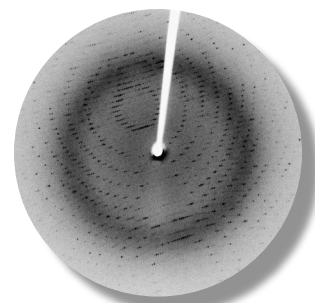
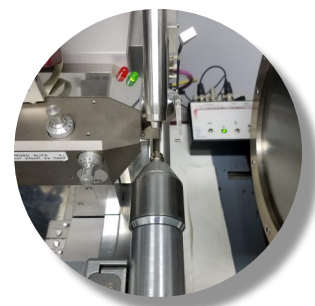
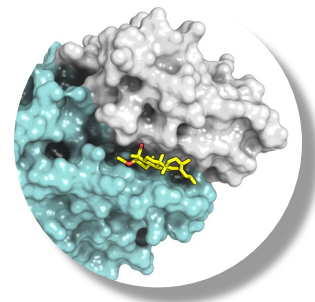
Wet lab and anaerobic chamber available

● Expertise in optimizing cryo-conditions

● Professional data illustration and presentation skills

● Easy access to beamline for non-US citizens

All data are backed-up to a secure off-site location



For further information please contact Nathaniel Gilbert at

 225-578-9342

 ngilbert@lsu.edu

 <https://www.lsu.edu/camd/beamlines/gcpcc/index.php>